



IGFBP2 Monoclonal Antibody

Catalog No	YP-Ab-15837
Isotype	IgG
Reactivity	Human
Applications	WB;IHC;IF;ELISA
Gene Name	IGFBP2
Protein Name	Insulin-like growth factor-binding protein 2
Immunogen	Purified recombinant fragment of protein IGFBP2 (aa180-328) expressed in E. Coli.
Specificity	IGFBP2 Monoclonal Antibody detects endogenous levels of IGFBP2 protein.
Formulation	Ascitic fluid containing 0.03% sodium azide,0.5% BSA, 50%glycerol.
Source	Monoclonal, Mouse
Purification	Affinity purification
Dilution	WB: 1/500 - 1/2000. IHC: 1/200 - 1/1000. ELISA: 1/10000.. IF 1:50-200
Concentration	1 mg/ml
Purity	≥90%
Storage Stability	-20°C/1 year
Synonyms	IGFBP2; BP2; IBP2; Insulin-like growth factor-binding protein 2; IBP-2; IGF-binding protein 2; IGFBP-2
Observed Band	
Cell Pathway	Secreted.
Tissue Specificity	Brain,Cerebrospinal fluid,Fetal liver,Ovary,Placenta,Retina
Function	function:IGF-binding proteins prolong the half-life of the IGFs and have been shown to either inhibit or stimulate the growth promoting effects of the IGFs on cell culture. They alter the interaction of IGFs with their cell surface receptors.,PTM:O-glycosylated.,similarity:Contains 1 IGFBP N-terminal domain.,similarity:Contains 1 thyroglobulin type-1 domain.,subunit:Binds IGF2 more than IGF1.,
Background	The protein encoded by this gene is one of six similar proteins that bind insulin-like growth factors I and II (IGF-I and IGF-II). The encoded protein can be secreted into the bloodstream, where it binds IGF-I and IGF-II with high affinity, or it can remain intracellular, interacting with many different ligands. High expression levels of this protein promote the growth of several types of tumors and may be predictive of the chances of recovery of the patient. Several transcript variants, one encoding a secreted isoform and the others encoding nonsecreted isoforms, have been found for this gene. [provided by RefSeq, Sep 2015],



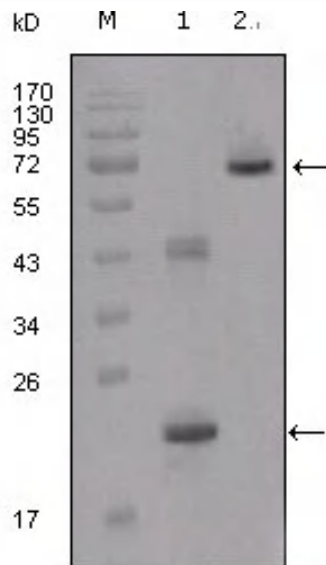
matters needing attention

Avoid repeated freezing and thawing!

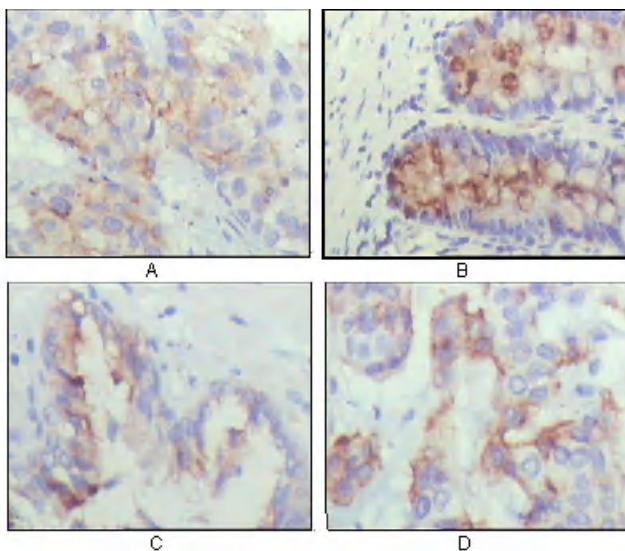
Usage suggestions

This product can be used in immunological reaction related experiments. For more information, please consult technical personnel.

Products Images



Western Blot analysis using IGFBP2 Monoclonal Antibody against truncated IGFBP2-His recombinant protein (1) and truncated IGFBP2 (aa40-328)-hIgGFc transfected CHO-K1 cell lysate (2).



Immunohistochemistry analysis of paraffin-embedded human lung cancer (A), rectum(B), prostate (C), colon cancer (D) showing cytoplasmic localization with DAB staining using IGFBP2 Monoclonal Antibody.